

# PRESS RELEASE

Available March 15, 2019

## ***Gravity Assist***

**Poems by Martha Silano**

**Saturnalia Books**

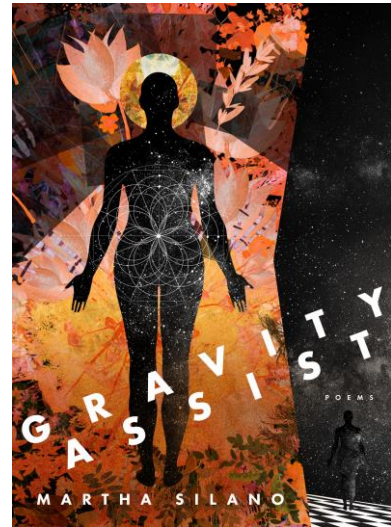
**distributed by IPG**

2019 • 96 pp 5.5 x 7.5

**Poetry**

March 15, 2019

**\$16.00 Paper, 9781947817005**



Gravity Assist, the newest collection by Martha Silano, masterfully measures the heights and depths of our earthly visions. Cerebral yet meditative, capacious yet focused, this book soars with investigations and ruminations, love letters, origin stories, and notes on gravitational forces both literal and metaphorical. Through her usual nimble style, Silano deftly weaves the humanistic and the cosmic, delivering a series of up-close and personal examinations of phenomena as far flung as copepods, nebula, trilobites, preening cormorants, or, "Reaching out to soothe you, /the twisted arms of the last of three species of endemic /sea stars ripping themselves apart, arms crawling away in opposite directions, insides spilling out."

Silano's *Gravity Assist* has an on-again-off-again romance with gravity, escaping its hold via high velocity repartee and swooning nose-dives, then falling in love with it again via concrete reality—the language of the natural world she loves, fears for, and mourns, like the extinct Carolina Parakeet who represents “an index card’s worth of grief.” From its first riff to its final revelation, *Gravity Assist* is a dizzy delight. —Diane Seuss

Martha Silano is the author of *What the Truth Tastes Like*, *Blue Positive*, *The Little Office of the Immaculate Conception* (winner of the 2010 Saturnalia Books Poetry Prize, an Academy of American Poets Noted Book of 2011 and a Washington State Book Award finalist), and *Reckless Lovely*. Her poems have appeared widely, in such places as *The Paris Review*, *North American Review*, *Ploughshares*, *Kenyon Review Online*, *American Poetry Review*, and in *The Best American Poetry 2009*. Martha teaches at Bellevue College.

[www.saturnaliabooks.com](http://www.saturnaliabooks.com) or call 800-421-1561